

KENT FLOOD RISK MANAGEMENT COMMITTEE

Monday, 22nd July, 2019

2.00 pm

Council Chamber - Sessions House





AGENDA

KENT FLOOD RISK MANAGEMENT COMMITTEE

Monday, 22nd July, 2019, at 2.00 pm

Ask for: **Andrew Tait**

Council Chamber - Sessions House

Telephone **03000 416749**

Tea/Coffee will be available 15 before the start of the meeting in the meeting room

Membership (7)

Conservative (6): Mr A R Hills (Chairman), Mr A H T Bowles, Mrs L Hurst,
Mr P W A Lake, Mr K Pugh and Mr H Rayner

Liberal Democrat (1) Mr I S Chittenden

UNRESTRICTED ITEMS

(During these items the meeting is likely to be open to the public)

Webcasting Notice

Please note: this meeting may be filmed for live or subsequent broadcast via the Council's internet site – at the start of the meeting the Chairman will confirm if all or part of the meeting is being filmed.

By entering the meeting room you are consenting to being filmed and to the possible use of those images and sound recordings for webcasting and/or training purposes. If you do not wish to have your image captured then you should make the Clerk of the meeting aware.

5. Kent Environment Strategy - Sustainable Communities: Presentation by Carolyn McKenzie (KCC Head of Sustainable Business and Communities) and Christine Wissink (Project Manager) (Pages 5 - 30)

EXEMPT ITEMS

(At the time of preparing the agenda there were no exempt items. During any such items which may arise the meeting is likely NOT to be open to the public)

Benjamin Watts
General Counsel
03000 416814

Friday, 12 July 2019

This page is intentionally left blank

KES: Adaptation in Kent Update

July 2019



**Sustainable Business &
Communities**

Interreg
North Sea Region
FRAMES
European Regional Development Fund



- CCRIA
- Kent Adaptation Programme
- Health and Social Care Analysis
- SWIMS
- Adaptation Catalyst

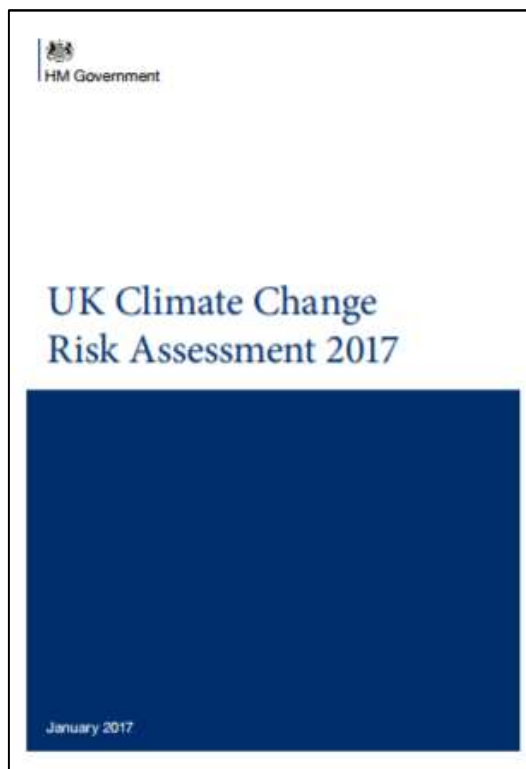
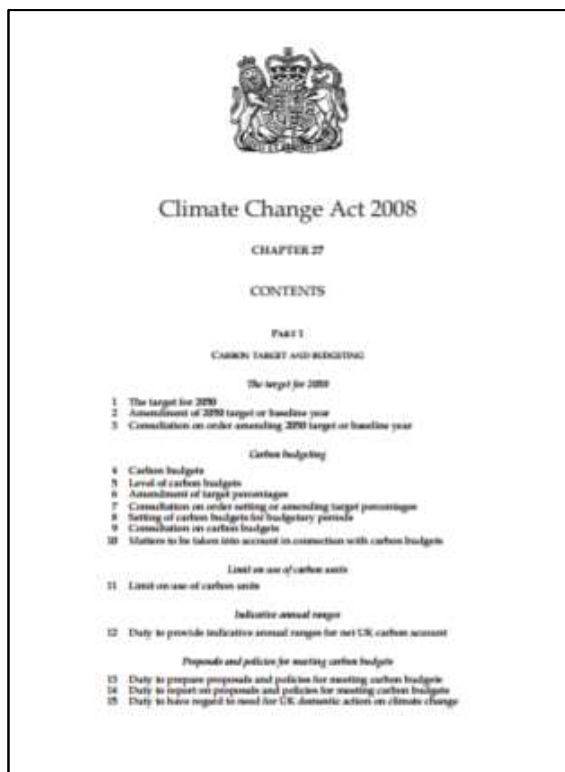


CCRIA and Adaptation Programme



National Legislative Framework

Page 8



CCRiA Activity so far...

September 2018

JBA appointed to develop CCRiA

Sept – December 2018

Desktop research & interviews

January 2019

Stakeholder workshop

February – May 2019

Drafting & refining CCRiA

May 2019

JBA hands over drafts to KCC

June – July 2019

KCC internal edits

Based on the UK CCRA 2017

Linked directly to the KES and the GIF

Comprised of:

Part 1 Context, Methodology and Summary

Part 2 Sector Sections

- Industry
- Agriculture
- Natural Environment
- People and the Built Environment
- Transport
- Utilities

Part 3 Sector Summaries

Future climate changes (UKCP18)

- **Hotter summers** with an increase in average summer temperature of 2-3°C by 2040 and 5-6°C by 2080
- **Warmer winters** with an increase in average winter temperature of 1-2°C by 2040 and 3-4°C by 2080
- **Drier summers** with a reduction in average precipitation of 20-30% by 2040 and 30-50% by 2080
- **Wetter winters** with an increase in average precipitation of 10-20% by 2040 and 20-30% by 2080
- **Sea level** is projected to rise by up to 0.3m by 2040 and 0.8m by 2080

Key findings

Priority Risks

Risks to health, wellbeing, productivity and infrastructure from high temperatures

Flooding and coastal change risks to communities, businesses and infrastructure

Risk of storm events/intense rainfall impacting productivity and transport infrastructure

Risks of shortages in the public water supply and for agriculture, energy generation and industry

Overheating, flooding, drought and coastal change risks for natural capital

Soil erosion and slope destabilisation as a result of flooding and drought impacting infrastructure, natural environment and productivity

Risk of new and emerging pests and diseases and invasive non-native species affecting people and biodiversity likely to affect Kent (first) in the future

Next steps

June to July 2019

Editing & refining final outputs

August 2019

Consultation with stakeholders

Autumn 2019

Publication CCRiA

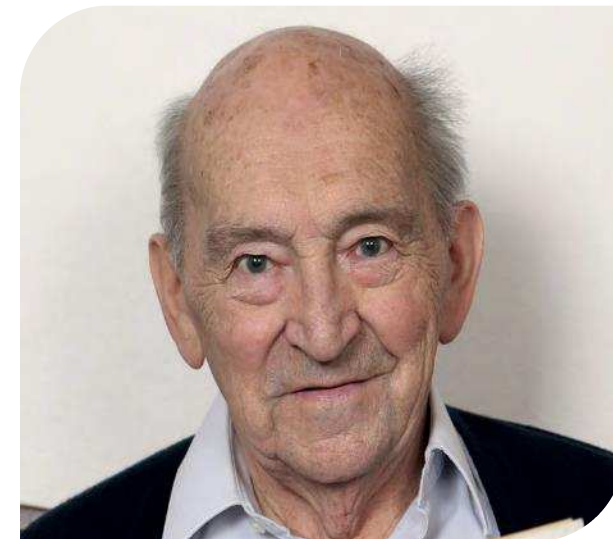
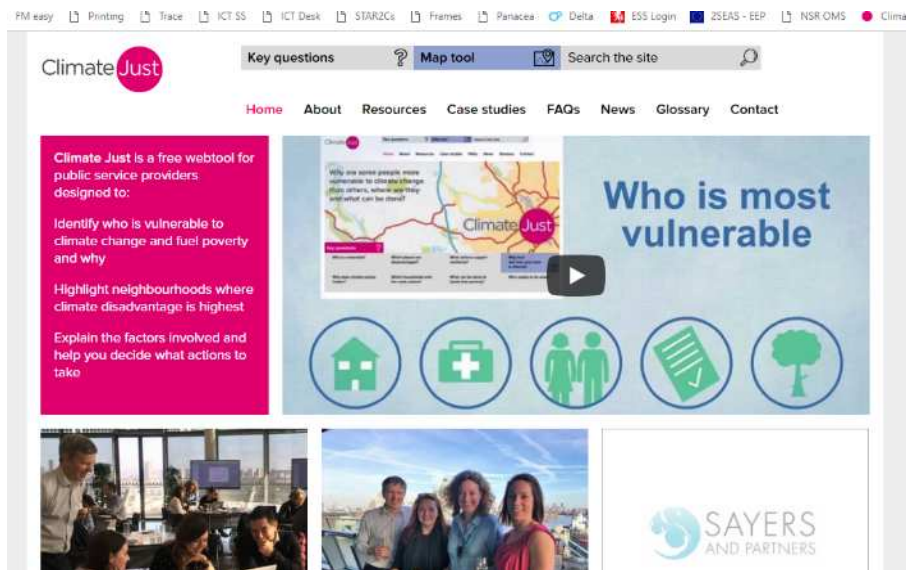
Follow on work:

- Update of Kent Climate projections (UKCP18)
- Development Kent Adaptation Programme and Plan
- District level support

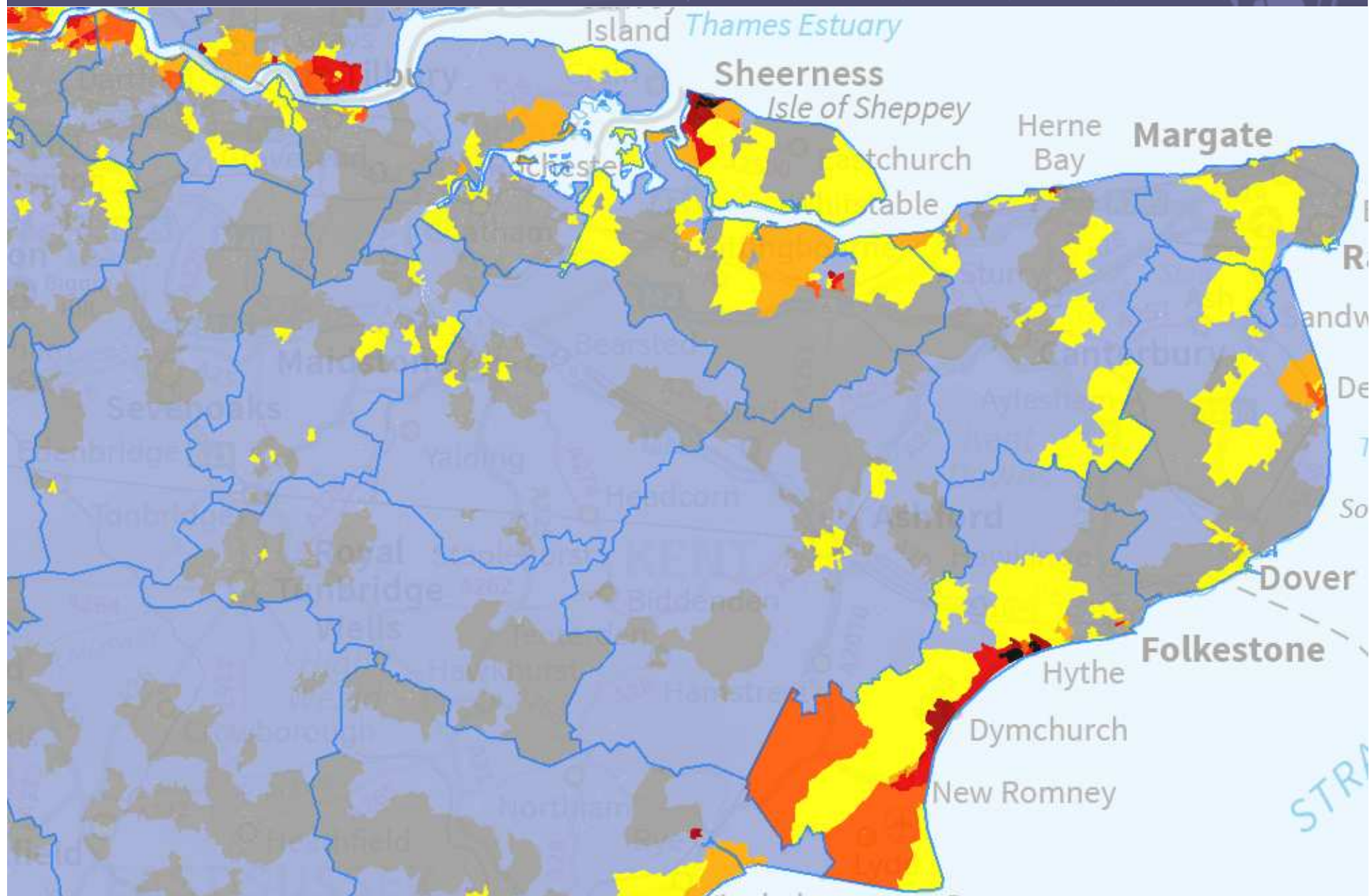
Health and Social Care Assessment



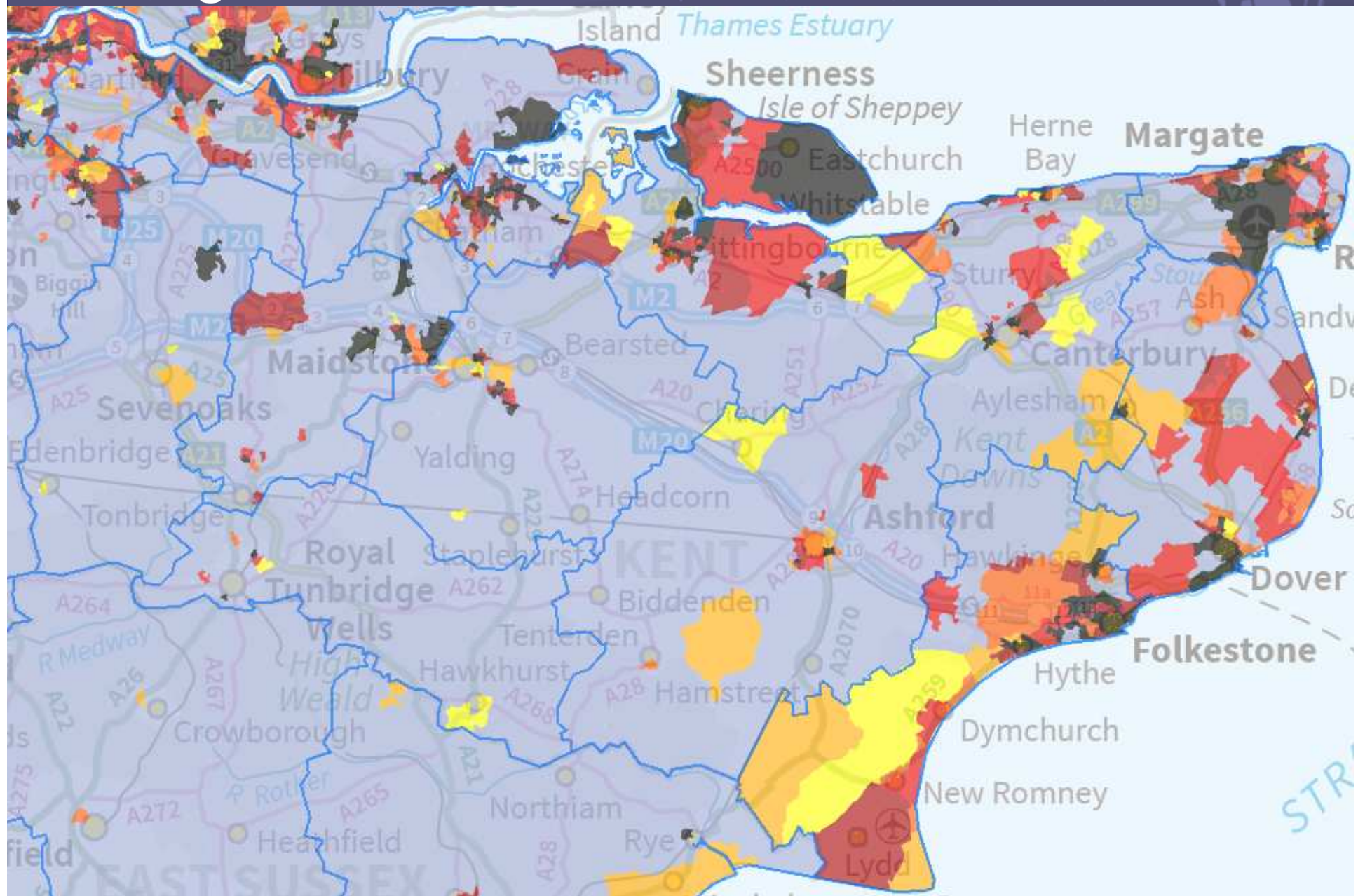
Flood disadvantage



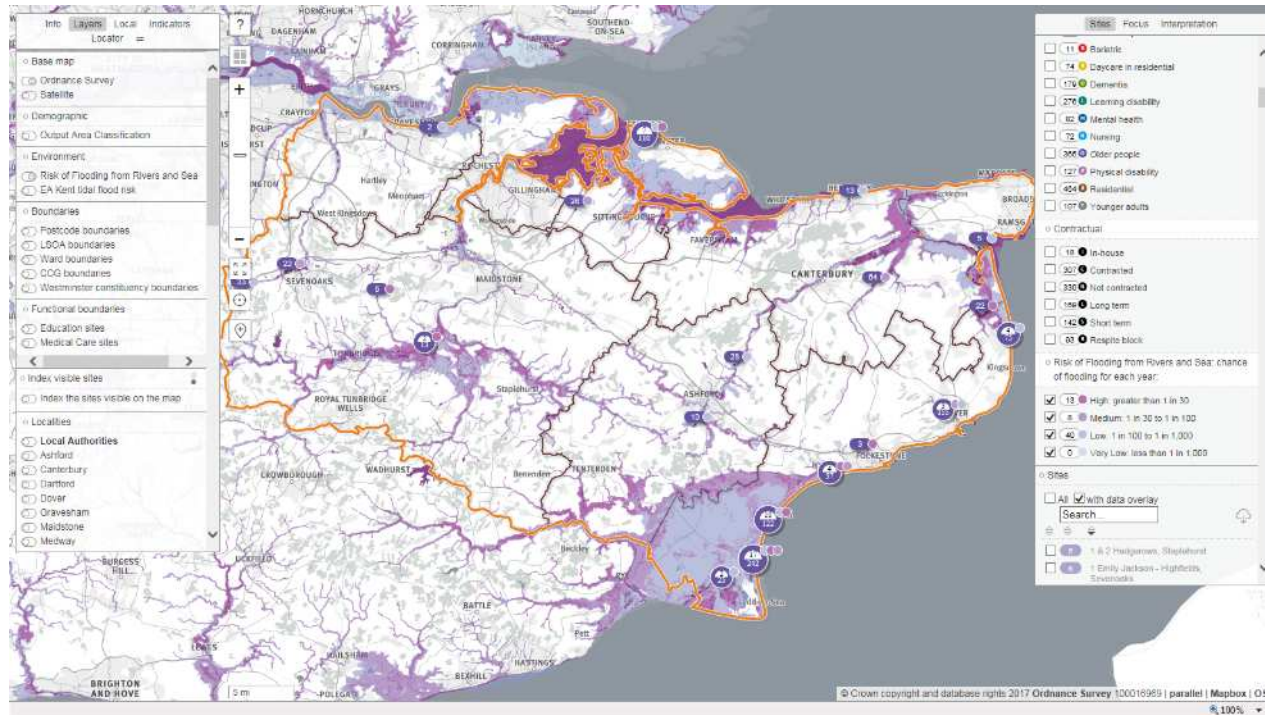
Flood disadvantage - Fluvial & coastal flooding



Flood disadvantage - Surface water flooding



What is SHAPE?



- Online mapping tool for Health & Social Care
- Shows physical location of care facilities around Kent
- Allows overlay of flood risk

Kent SHAPE Atlas – initial findings



SWIMS Update



What is SWIMS?

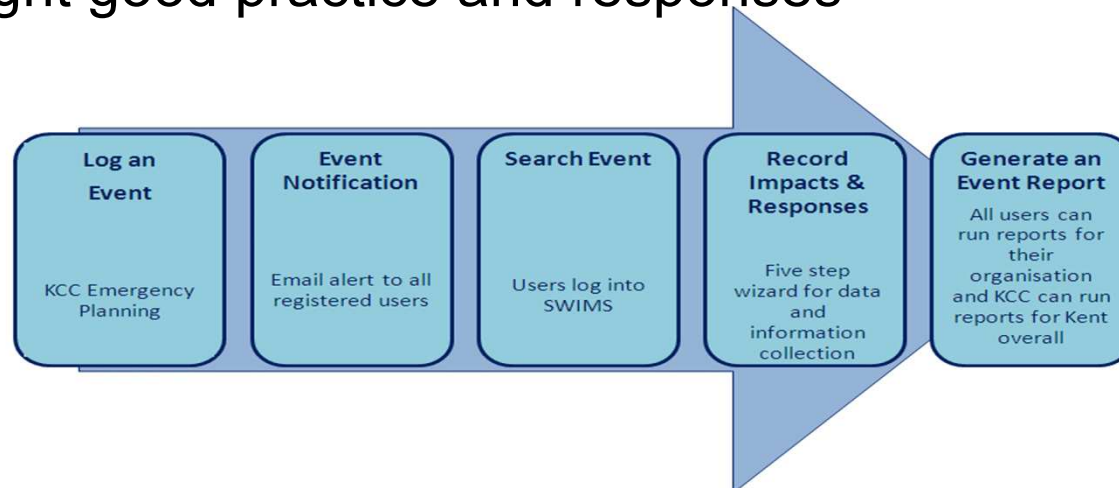


Builds a robust evidence base

- Input of impacts, costs and responses
- Captures data on how severe weather events affect services

Decision-support and business planning tool

- Evidence to help build business cases for action, changes in services or acquiring funding
- Aid in informing risk management, policy and strategy
- Highlight good practice and responses



Findings



YEAR	# EVENTS	COSTS
2012	14	£854,202.92
2013	15	£4,137,114.18
2014	6	£12,950,521.45
2015	4	£3,527.99
2016	7	£316,480.87
2017	7	£54,518.40
2018	5	£19,977.54
TOTAL	58	£18,336,343.35



EVENT TYPE	# EVENTS	COSTS
Drought	1	0
Heatwave	4	£3,300
Low Temperature	7	£2,353,267.8
Storms & Gales	46	£15,979,775.55

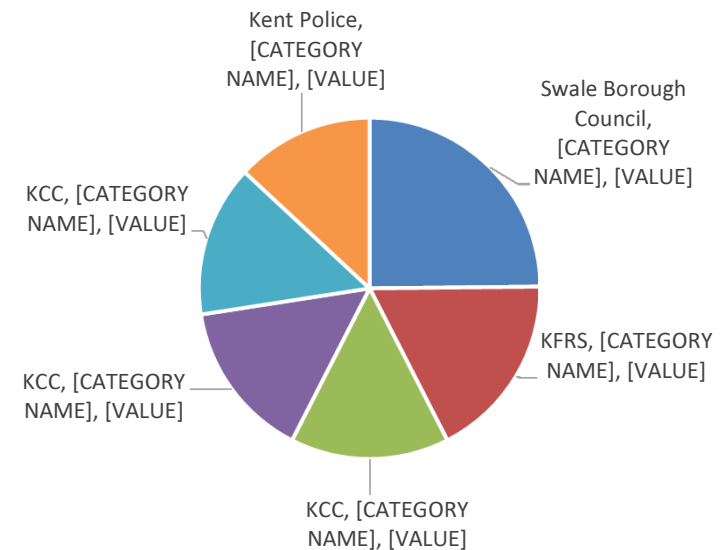


Quality and Consistency

- 129 departments across 38 organisations
- 72 departments have no record of SWIMS input between 2012 – 2018
- 21/57 have input data once in the years that SWIMS has been active

Page 23

YEAR	# EVENTS	# ENTRIES	# Services Input
2012	14	81	22
2013	15	82	26
2014	6	51	29
2015	4	50	26
2016	7	69	23
2017	7	67	20



Number of entries of the top 6 Departments inputting SWIMS Data (2012 – 2017)

Update

Challenges

- Changes in users
- Continued value
- System itself



Solutions

- New System!



Next Steps

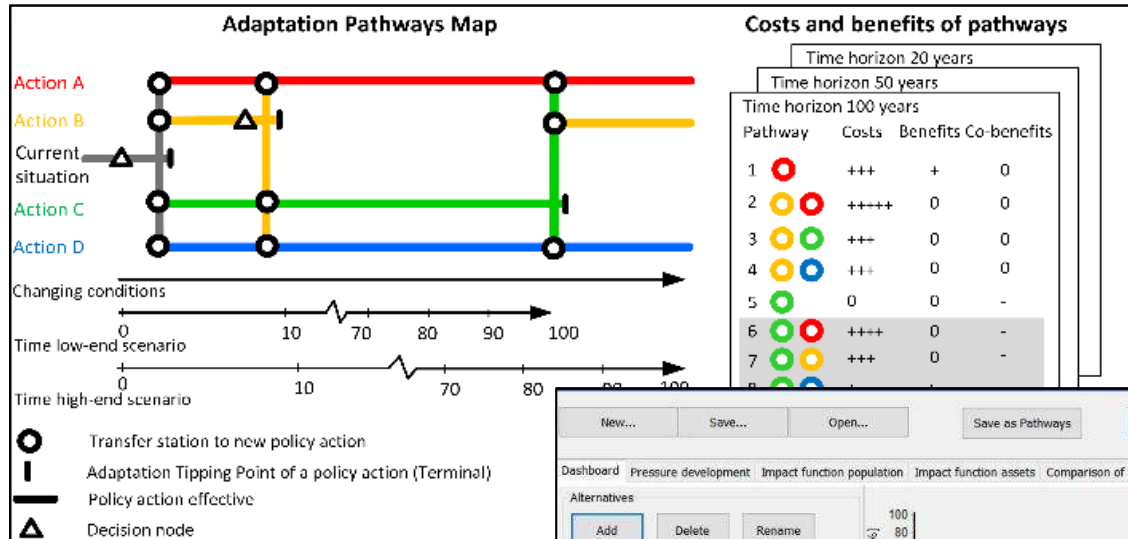
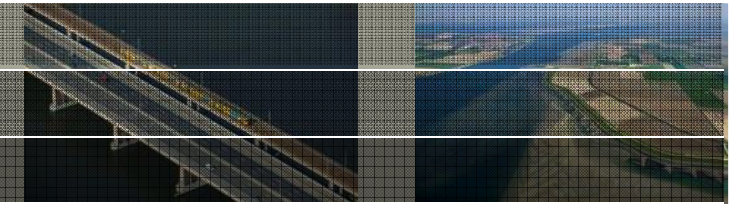
- System Design: June 2019
- Sprints: July-September
- User testing: August- September
- Launch: October

1 Now
2 Soon
3 At the same time
X Never
X Nope
X Ain't gonna happen

Adaptation Catalyst



STAR2Cs Adaptation Catalyst

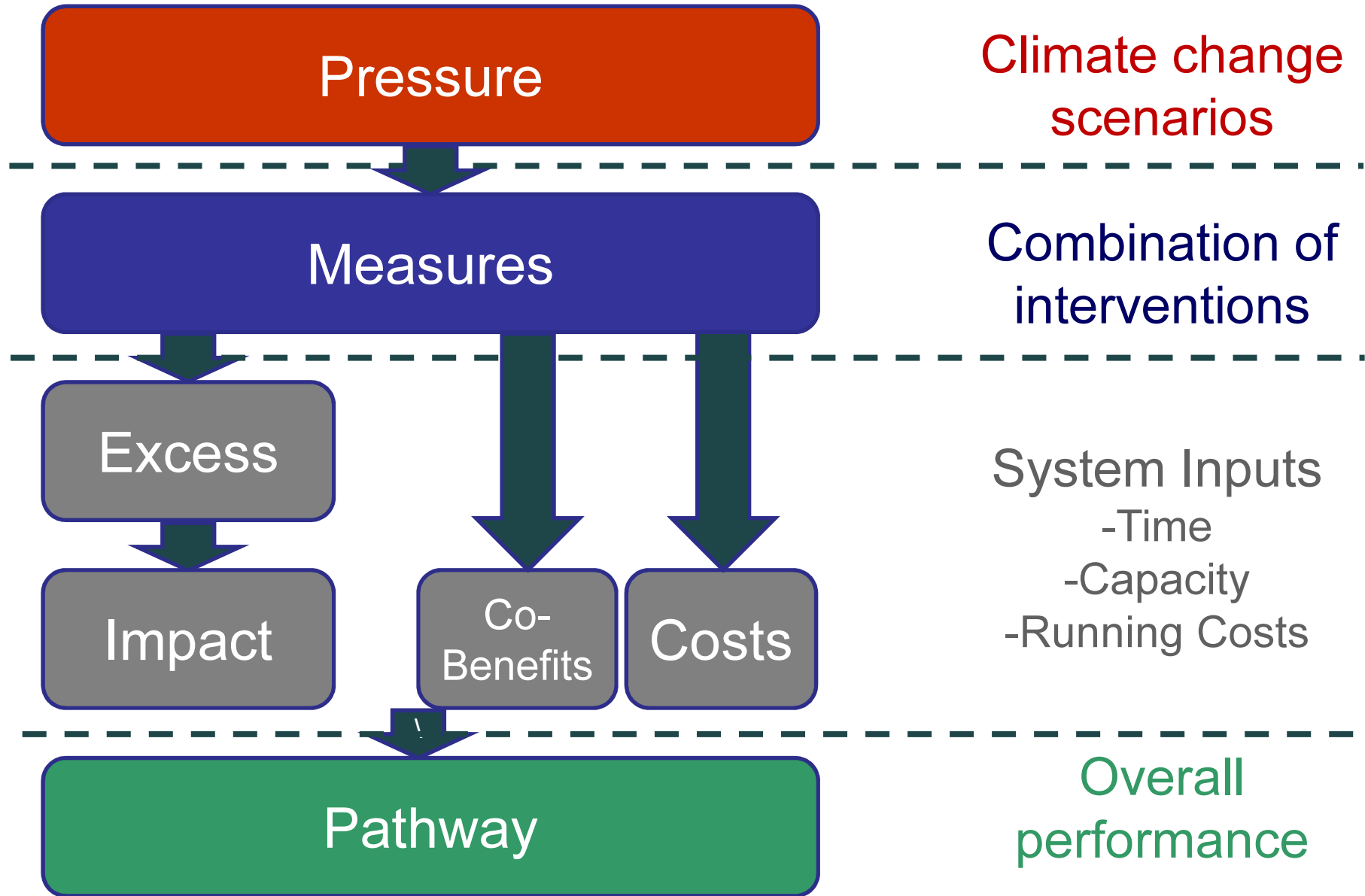


Adaptation Pathways to Adaptation Capacity



Deltares

Star2C Adaptation Catalyst tool



Results published on public wiki page

Page 28



Thank you



This page is intentionally left blank